

Power Meters

Power Measurements

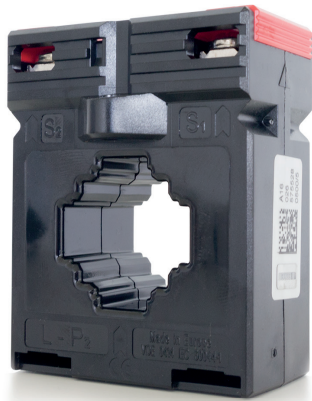
Depending on their use, different operating modes can be configured in the Solar-Log™ for the meters. It is possible to record production output (generator), consumption (consumption or bi-directional meter) and sub-consumer values such as battery charge levels. Due to the operating modes, the compatible meters can be used for a wide range of possible applications.



Technical data	Solar-Log™ PRO380, three-phase current meter, MID (calibrated), RS485	Solar-Log™ PRO380-CT, Transformer-connected meter, RS485, three-phase	Solar-Log™ PRO1, single-phase energy meter, 1-phase, MID (calibrated), RS485	Solar-Log™ PRO2, single-phase energy meter, 1-phase, MID (calibrated), RS485
Connections	External tariff switching / 4-pin S ₀ Out for A+, A- / 2-pin Modbus interface	2 x S ₀ (forward, reverse) RS485 (Modbus) External tariff switching	2-pin S ₀ -Out 2-pin Modbus interface	2-pin Modbus interface RTU interface
Direct connection	100 A	6 A (Transformer input)	45 A	100 A
Interfaces	S ₀ / RS485 maximum 32 units	S ₀ / RS485 maximum 32 units	S ₀ / RS485 maximum 32 units	S ₀ / RS485 maximum 32 units
Voltage U _n	3 x 230 / 400V AC (-15% - +10%)	3 x 230 / 400 V AC (100 / 173V - 270 / 468V)	230 V AC	230 V AC
Measuring range	20 mA - 100 A	6 mA - 5 A	20 mA - 45 A	20 mA - 100 A
Self-consumption	≤ 10 VA - ≤ 2 W per phase	≤ 2 W per phase - ≤ 10 VA per phase	≤ 10 VA - ≤ 2 W per phase	≤ 10 VA - ≤ 2 W per phase
Start-up current	20 mA	3 mA	20 mA	20 mA
Power frequency	50 Hz	50 Hz	50 Hz	50 Hz ± 10 %
Dimensions (w x h x d) in mm	70 x 140 x 63	70 x 140 x 63	17,5 x 117 x 63	35,8 x 141,5 x 63
Wire diameter	Maximum 25 mm ² or 2,5 mm ² (Additional terminals)	Maximum 10 mm ² or 2,5 mm ² (Additional terminals)	Maximum 10 mm ² or 2,5 mm ² (Additional terminals)	Maximum 25 mm ² or 2,5 mm ² (Additional terminals)
Protection level	IP51	IP51	IP51	IP51
LCD Display	6 + 2 Digits	5 + 3 Digits	4 + 2 Digits	5 + 2 Digits (99999,11 kWh)
S ₀ pulse	1000 Imp / kWh	1000 Imp / kWh, 30 ms	2 000 Imp/kWh, RA = 0,5 Wh/Imp	1 000 Imp/kWh, 31ms
Misc.	Blue illuminated display, one additional resettable counter, display for active and reactive power in two energy flow directions, Display: I, U, P, S, F, cos phi	Blue illuminated display, one additional resettable counter, display for active and reactive power in two energy flow directions, Display: I, U, P, S, F, cos phi	Blue illuminated display, one additional resettable counter, display for active and reactive power in two energy flow directions, Display: I, U, P, S, F, cos phi	Blue illuminated display, one additional resettable counter, display for active and reactive power in two energy flow directions, Display: I, U, P, S, F, cos phi
Warranty	2 years	2 years	2 year	2 year
Article number	255913	256059	255914	256324

Article number

Solar-Log™ PRO380-CT 500A Measuring transformer for conductor line 30 x 10 mm or compact round cable up to 26 mm Class 1, uncalibrated, secondary current 5A	256067
Solar-Log™ PRO380-CT 250A Measuring transformer for conductor line 30 x 10 mm or compact round cable up to 26 mm Class 1, uncalibrated, secondary current 5A	256068
Solar-Log™ PRO380-CT 100A Measuring transformer for conductor line 30 x 10 mm or compact round cable up to 26 mm Class 1, uncalibrated, secondary current 5A	256069
Solar-Log™ PRO380-CT 500A Cable split core current transformer Class 1, round cable up to 32 mm, uncalibrated, small size model, connecting cable 2.5 m included, secondary current 1A	256070
Solar-Log™ PRO380-CT 250A Cable split core current transformer Class 3, round cable up to 18 mm, uncalibrated, small size model, connecting cable 2.5 m included, secondary current 1A	256071
Solar-Log™ PRO380-CT 100A Cable split core current transformer Class 3, round cable up to 18 mm, uncalibrated, small size model, connecting cable 2.5 m included, secondary current 1A	256072
Solar-Log™ PRO380-CT 500A, Class 0.5, Measuring transformer for conductor line 30 x 10 mm or compact round cable up to 26 mm, Declaration of Conformity, approval for billing, secondary current 5A	256073
Solar-Log™ PRO380-CT 250A, Class 0.5, Measuring transformer for conductor line 30 x 10 mm or compact round cable up to 26 mm, Declaration of Conformity, approval for billing, secondary current 5A	256074
Solar-Log™ PRO380-CT 100A, Class 0.5, Measuring transformer for conductor line 30 x 10 mm or compact round cable up to 26 mm, Declaration of Conformity, approval for billing, secondary current 5A	256075



Measuring transformer



Cable split core current transformer