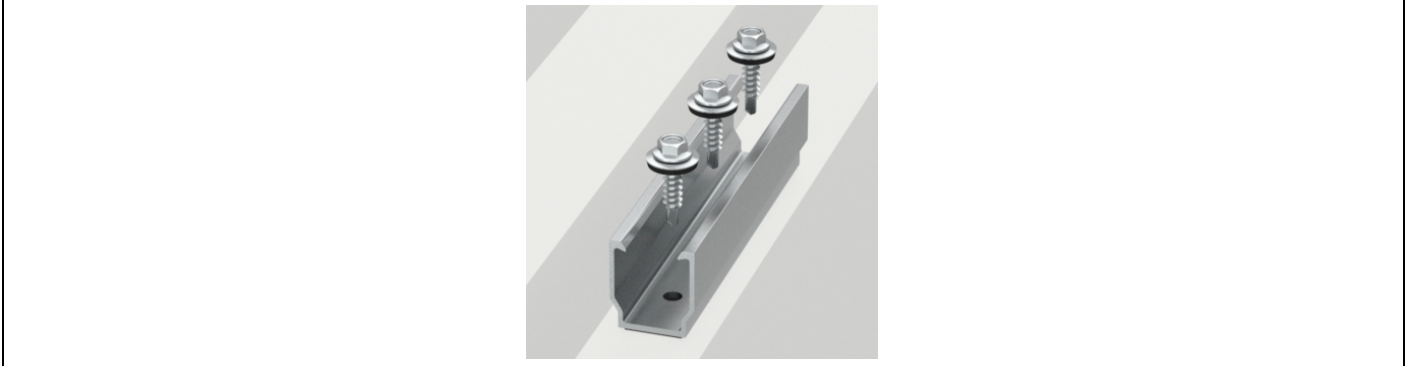
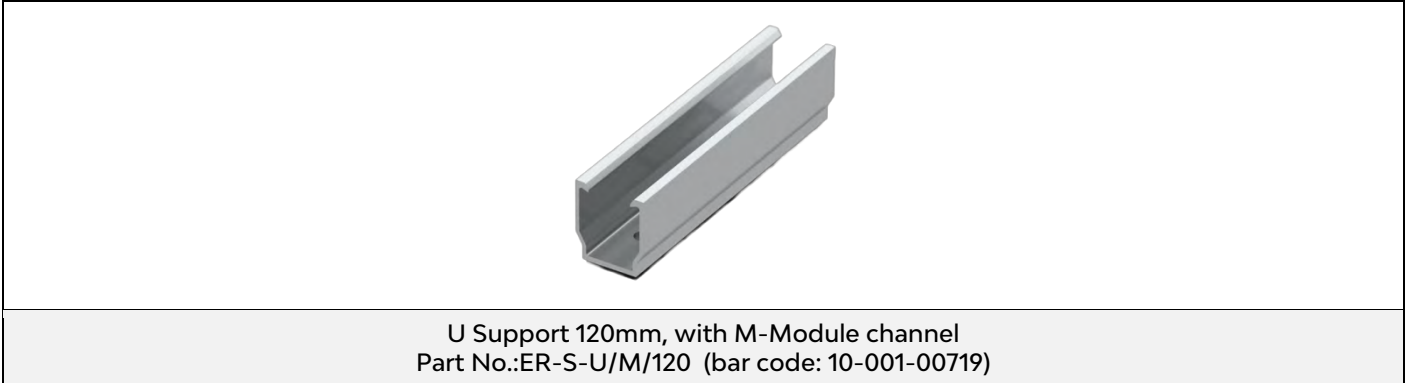


U Support 120mm, with M-Module channel

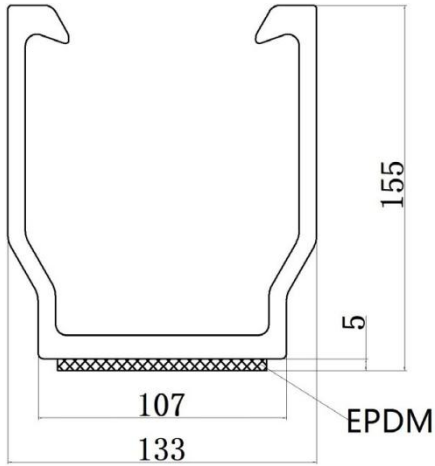
Assembly



Component



Technical Specification

Application	Trapezoidal Roof	
Fixing method	Fixed on the Metal roof with Self-drilling screw	
EPDM	Pre-fitted (1mm thickness)	
Dimensions	L120mm*W28mm*H31mm	
Weight	0.05 kg	
Packaging	80 units per pack, 4 packs (320 units) per carton	
Material	Main Structure: AL6005-T5 Screw: SUS304 Rubber Pad: EPDM	
Color	Silver	
Finish	Anodized (no less than 10 µm, excluding machined surfaces)	
Standard	GB50797 AS NZS1170.2-2011 EN1991 JISC8955 ASCE 7-10	